

TYPICAL RESIDENTIAL OVERHEAD INSTALLATION

A. GENERAL NOTES:

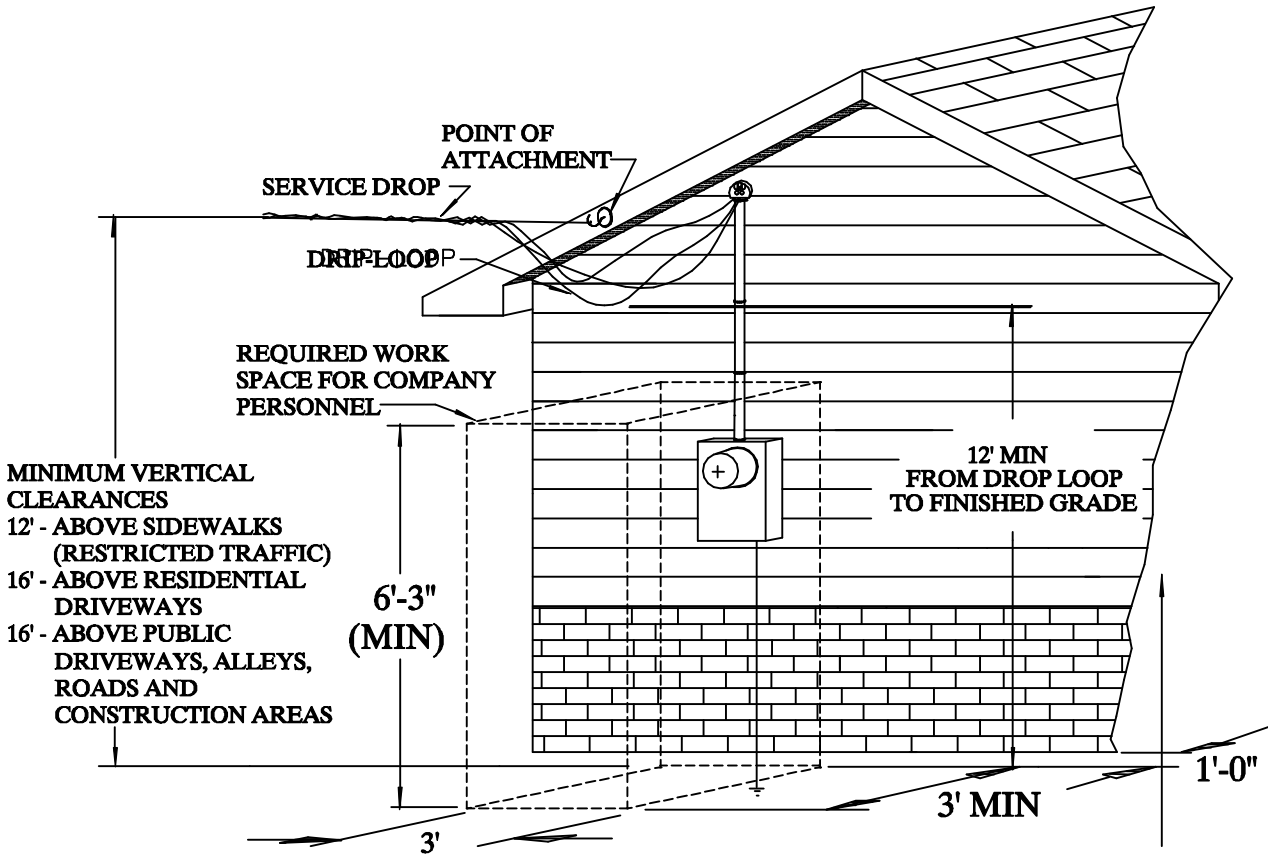
- Service entrance line and load conductors, conduit straps, weatherhead, lock nuts, bushings, connectors, and miscellaneous mounting hardware furnished and installed by customer.
- Type SE entrance cable sized per NEC requirements is permissible as allowed by local inspection authority.
- Meter socket, meter socket hub and service drop attachment device furnished by Company and installed by customer.
- Service drop attachment shall be installed at minimum vertical clearance as illustrated. If minimum vertical clearance can not be maintained with the installation of an attachment bolt as shown, the customer shall install a steel service mast.
- Connections between service drop and service entrance conductors shall be made below weatherhead forming a drip loop.
- Meter and service drop furnished and installed by Company.
- Meter socket shall be readily accessible and allow workspace as illustrated.
- Placement of meter socket in alley ways or areas where meter is subject to damage shall require advance approval of a qualified employee.

B. MOUNTING:

- Meter socket and conduit shall be surface mounted without brick or other exterior veneers encasing the equipment.
- Meter socket and conduit straps shall be fastened to building using lead anchors (brick or solid masonry), toggle bolts (other masonry siding) or wood screws (studs, solid lumber). All screws and bolts shall be minimum #12 corrosion resistant. A minimum of four (4) fasteners shall be used to mount socket.

C. CONNECTIONS:

Customer shall apply a non-grit type corrosion inhibitor to connections and terminate them by torquing to manufacturer's specifications located in the enclosure. **Do not over-torque!**

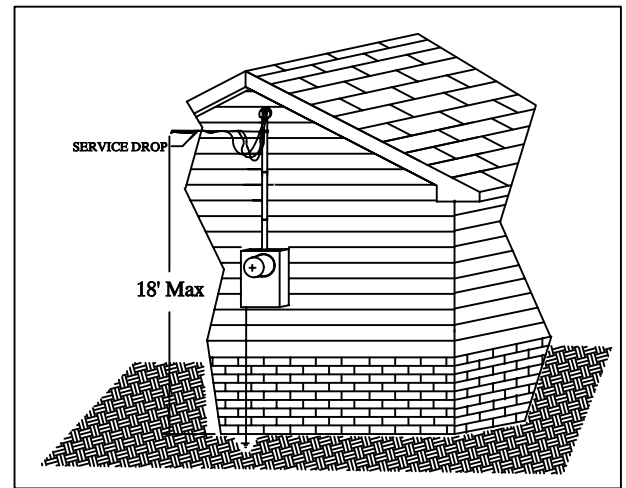


MINIMUM VERTICAL CLEARANCES
 12' - ABOVE SIDEWALKS
 (RESTRICTED TRAFFIC)
 16' - ABOVE RESIDENTIAL DRIVEWAYS
 16' - ABOVE PUBLIC DRIVEWAYS, ALLEYS, ROADS AND CONSTRUCTION AREAS

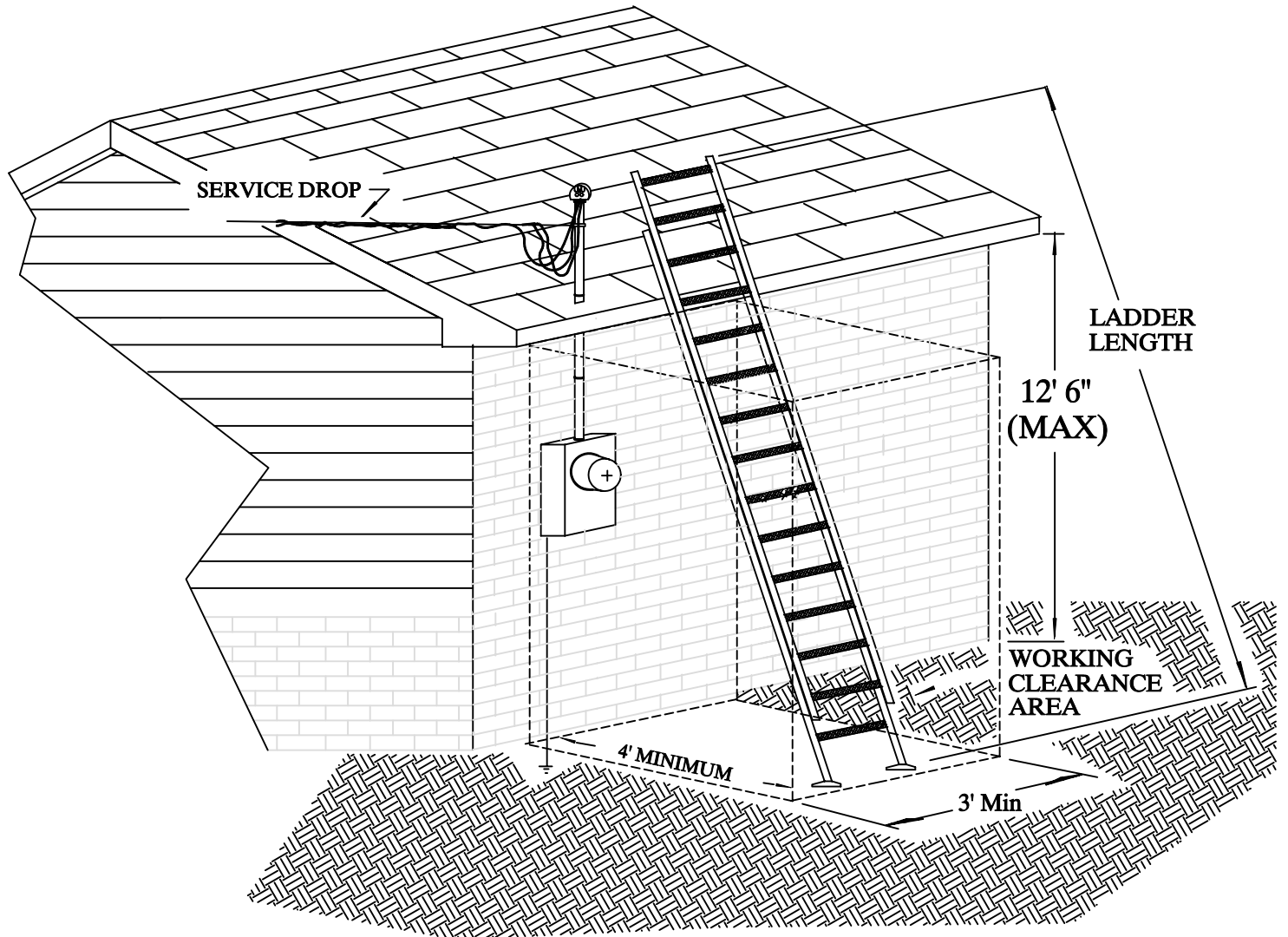
EXCEPTION AS NOTED IN NESC TABLE 232-1 FN 7 & 8

NOTES:

- OVERHEAD SERVICES SHOULD BE ACCESSIBLE BY MISSISSIPPI POWER CO. PERSONNEL USING A 16' LADDER.
- THESE 2 DRAWINGS SHOW THE OBSTRUCTION FREE WORKING CLEARANCES NECESSARY FOR MPC PERSONNEL TO SAFELY INSTALL OR MAINTAIN AN OVERHEAD SERVICE TO A HOME OR BUSINESS.
- BEFORE CONSTRUCTING AN OVERHEAD SERVICE, CALL MPC AT 1-800-532-1502 AND ASK FOR AN ENGINEER IF YOU ARE UNABLE TO MEET THESE CLEARANCES.



FOR GABLE SIDE INSTALLATION



SUBJECT **SERVICE HEIGHT GUIDELINES**

DETAIL _____

Date **3/20/08**

REVISED _____



MS0017a

TYPICAL STEEL SERVICE MAST INSTALLATION

A. GENERAL NOTES:

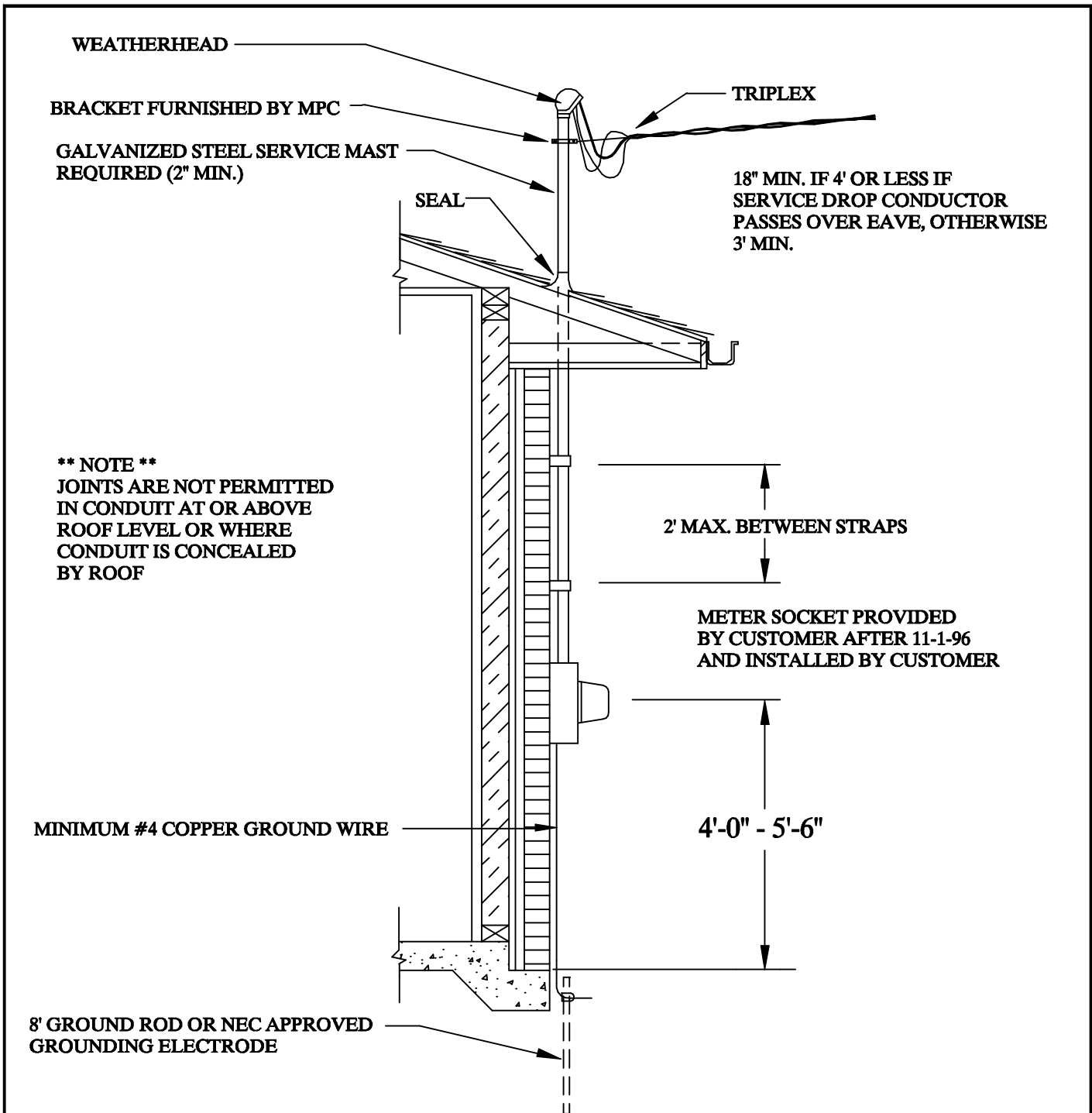
- Service entrance line and load conductors, conduit straps, weatherhead, lock nuts, bushings, connectors, and miscellaneous mounting hardware furnished and installed by customer.
- Galvanized steel pipe mast required with no joints above last wall strap.
- Meter socket, meter socket hub and service drop attachment device furnished by Company and installed by customer.
- Meter and service drop furnished and installed by Company.
- Meter socket shall be readily accessible and allow workspace.
- Placement of meter socket in alley ways or areas where meter is subject to damage shall require advance approval of a qualified employee.

B. MOUNTING:

- Meter socket and conduit shall be surface mounted without brick or other exterior veneers encasing the equipment.
- Meter socket and conduit straps shall be fastened to building using lead anchors (brick or solid masonry), toggle bolts (other masonry siding) or wood screws (studs, solid lumber). All screws and bolts shall be minimum #12 corrosion resistant. A minimum of four (4) fasteners shall be used to mount socket.

C. CONNECTIONS:

Customer shall apply a non-grit type corrosion inhibitor to connections and terminate them by torquing to manufacturer's specifications located in the enclosure. **Do not over-torque!**



GENERAL NOTES:

1. BUILDING ROOF DESIGNS MAY DIFFER FROM DESIGN SHOWN.
2. MASTS TALLER THAN 36" ABOVE ROOF SHALL BE GUYED.
3. LENGTH OF SERVICE DROP EXTENDING OVER ROOF (INCLUDING EAVES AND GUTTER) SHALL NOT EXCEED 48".

Mississippi Power 
the southern electric system

DISTRIBUTION SPECIFICATIONS ©

SUBJECT TYPICAL STEEL SERVICE MAST INSTALLATION

DETAIL _____

Date 05/30/96

Plate 51

File MS0018

TRIPLEX SERVICE INSTALLATION

A. GENERAL NOTES:

- Service entrance line and load conductors, conduit straps, weatherhead, lock nuts, bushings, connectors, and miscellaneous mounting hardware furnished and installed by customer.
- Type SE entrance cable sized per NEC requirements is permissible.
- Meter socket, meter socket hub and service drop attachment device furnished by Company and installed by customer.
- Eye bolt or toggle bolt should extend through fascia to rafter, or solid lumber and fasten securely. MPC furnishes eye bolt only. Use of thread thru insulator or screw type hook should be avoided.
- Connections between service drop and service entrance conductors shall be made below weatherhead forming a drip loop.
- Meter and service drop furnished and installed by Company.
- Meter socket shall be readily accessible and allow workspace.
- Placement of meter socket in alley ways or areas where meter is subject to damage shall require advance approval of a qualified employee.

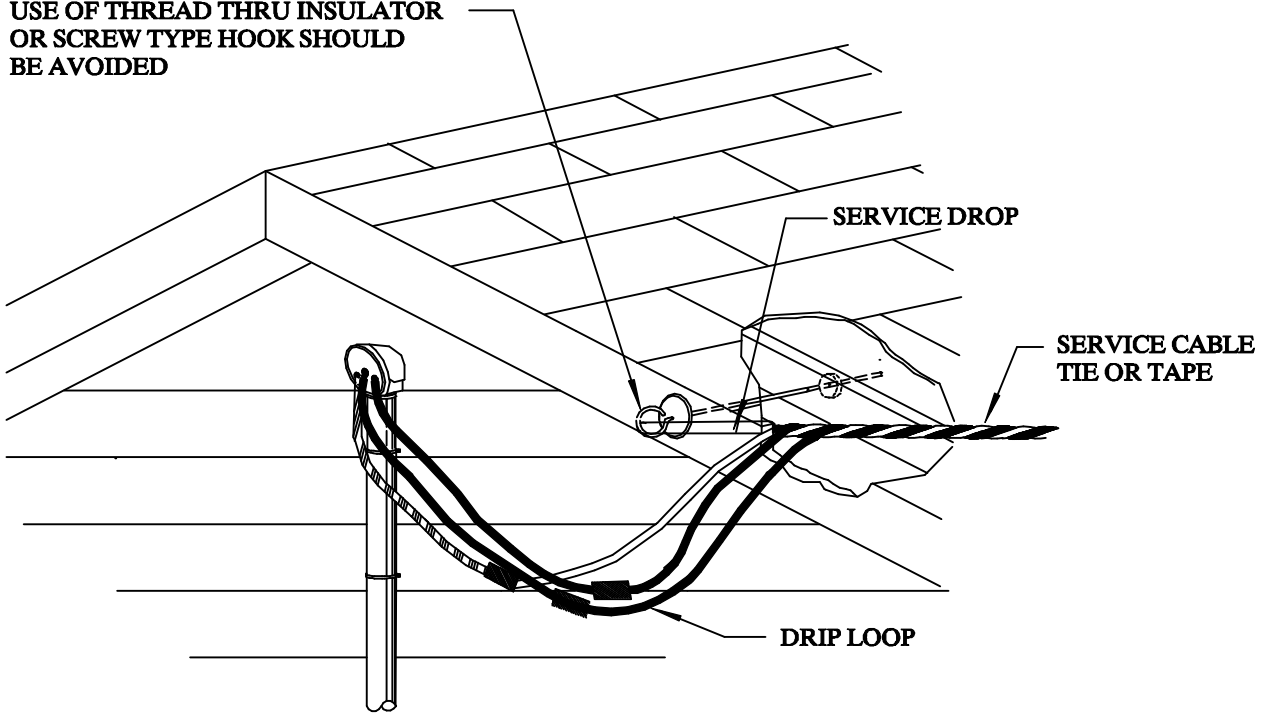
B. MOUNTING:

- Meter socket and conduit shall be surface mounted without brick or other exterior veneers encasing the equipment.
- Meter socket and conduit straps shall be fastened to building using lead anchors (brick or solid masonry), toggle bolts (other masonry siding) or wood screws (studs, solid lumber). All screws and bolts shall be minimum #12 corrosion resistant. A minimum of four (4) fasteners shall be used to mount socket.

C. CONNECTIONS:

Customer shall apply a non-grit type corrosion inhibitor to connections and terminate them by torquing to manufacturer's specifications located in the enclosure. **Do not over-torque!**

FOR NEW INSTALLATIONS, EYE BOLT SHOULD EXTEND THROUGH FACIA TO RAFTER OR SOLID LUMBER AND FASTEN SECURELY. USE OF THREAD THRU INSULATOR OR SCREW TYPE HOOK SHOULD BE AVOIDED



GENERAL NOTES:

1. DEVICE FOR ATTACHING SERVICE DROP TO BUILDING FURNISHED BY MPC AND INSTALLED SECURELY BY CUSTOMER AS NOTED ABOVE.
2. CONNECTIONS BETWEEN SERVICE ENTRANCE CONDUCTORS AND SERVICE DROPS SHALL BE MADE (BY MPC PERSONNEL) BELOW WEATHERHEAD, FORMING A DRIP LOOP.

Mississippi Power
the southern electric system



DISTRIBUTION SPECIFICATIONS

©

SUBJECT TRIPLEX SERVICE INSTALLATION - NON-THRU THE ROOF

DETAIL _____

Date 10/13/95

Plate 53

File MS0021

TYPICAL INSTALLATION OF UNDERGROUND, SINGLE PHASE SERVICE OVER 400 AMPERES USING INSTRUMENT TRANSFORMERS

A. GENERAL NOTES:

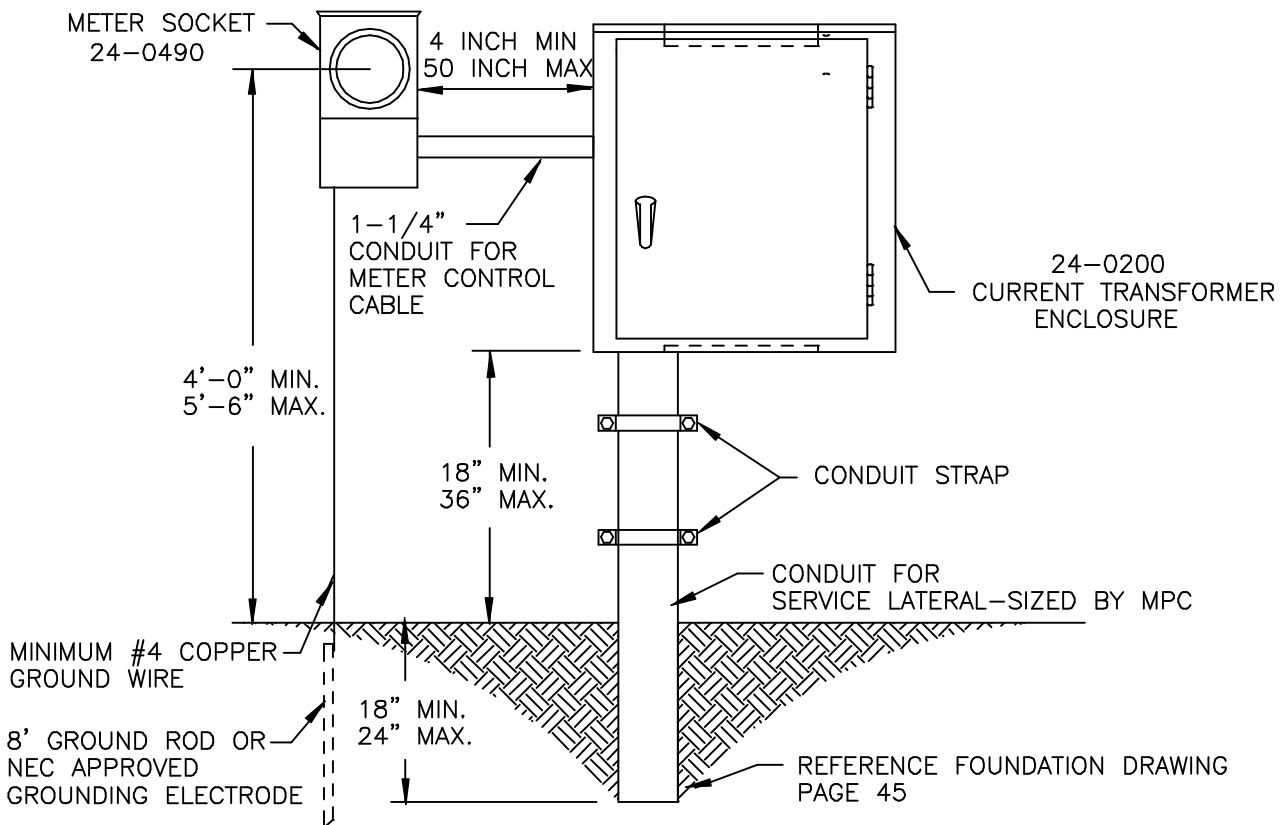
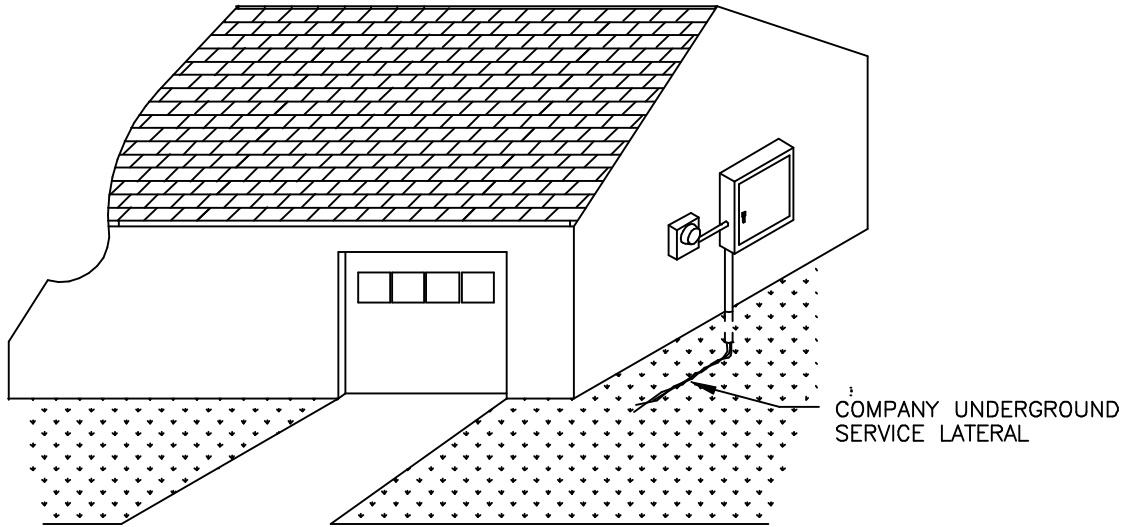
- Service lateral and meter furnished and installed by Company. Customer to provide approximate final grade level within six inches (6") prior to service lateral installation.
- Instrument transformers furnished and installed by Company.
- Meter socket and instrument transformer enclosure furnished by Company and installed by customer.
- Conduit shall be 1-1/4" rigid metal, intermediate metal, or PVC furnished and installed by customer.
- Metering control cable furnished and installed by Company.
- Conduit riser to current transformer enclosure **sized by Company**, furnished and installed by customer.
- Requirements regarding accessibility to equipment and unobstructed working space adjacent to metering equipment are specified under Service Locations.
- Placement of meter socket in alley ways or areas where meter is subject to damage shall require advance approval of a qualified employee.

B. MOUNTING:

- Enclosure, socket and conduits for service lateral and meter control cable shall be surface mounted without brick or other exterior veneers encasing the equipment.
- Enclosure, socket and conduit straps shall be fastened to building using lead anchors (brick or solid masonry), toggle bolts (other masonry siding) or wood screws (studs, solid lumber). All screws and bolts shall be minimum #12 corrosion resistant. A minimum of four (4) fasteners shall be used to mount both enclosure and socket.

C. CONNECTIONS:

Customer shall apply a non-grit type corrosion inhibitor to connections and terminate them by torquing to manufacturer's specifications located in the enclosure. **Do not over-torque!**



DISTRIBUTION SPECIFICATIONS

©

Mississippi Power
the southern electric system



SUBJECT SINGLE PHASE 120/240 VOLT UNDERGROUND SERVICE

DETAIL OVER 400 AMPS USING INSTRUMENT TRANSFORMERS

Date 10/13/95

Plate 55

File MS0099